

# SELF PROPELLING TRANSPORT VEHICLES



**TEAM**

# COMPANY

The enterprise TEAM Marek Pasierbski has been conducting activity on the automotive market without interruption since 1994. First vehicles for the Lubin copper conglomerate KGHM Polska Miedź S.A. (for the purpose of use in underground sections of mines) had been produced in 1997.

The working conditions of mine galleries situated more than 1000 metres underground are exceptionally hard, owing to:

- high temperatures
- humidity
- high salinity
- rocky base with significant level differences.

Currently in Polish mines there are more than 400 vehicles of this type in a dozen or so different variants, which travel between several to several dozens of thousands kilometres every year.





### GENERAL CHARACTERISTICS

The vehicle is intended for transporting people and explosives as well as other materials in methane-free excavations of plants mining minerals other than hard coal.

The currently manufactured series of types is marked with the symbol SWT -TEAM 10/14/20 where:

**SWT** – means Self Propelling Transport Vehicle

**TEAM** – element of the name of manufacturer

**10/14/20** – the number of transported persons

Currently the enterprise TEAM Marek Pasierbski is a significant dealer of the Polish Land Rover network with a separate department for the production of special-purpose vehicles.



# SWT-TEAM 10

## TECHNICAL PARAMETERS

Length: ..... 4900 mm  
Width: ..... 1990 mm  
Height: ..... 2100 mm  
Wheelbase: ... 2794 mm  
Track width: .. 1486 mm  
Clearance: ..... 210 mm  
Fording depth: 500 mm  
Approach angle: 32°  
Departure angle: 21°  
Curb weight (with operator): ≈2600 kg (subject to completing)

Technically permissible mass on each axle:

- Max front axle load: 1580 daN
- Max rear axle load: 2200 daN
- Total permissible weight: 3500 kg

Technically permissible towable mass in case of trailer:

- unbraked trailer: ..... 750 kg
- trailer with overrun brake: 1500 kg

Velocity:

- Max speed: ..... 40 km/h
- transport of people: ..... 25 km/h
- transport of explosives: 10 km/h

Excavation parameters:

- Min excavation width: 4400 mm
- Min excavation height: 2300 mm
- Max longitudinal excavation slope: 8°
- Max transverse excavation slope: 5°

Number of carried people: 9 persons + operator

Available engines:

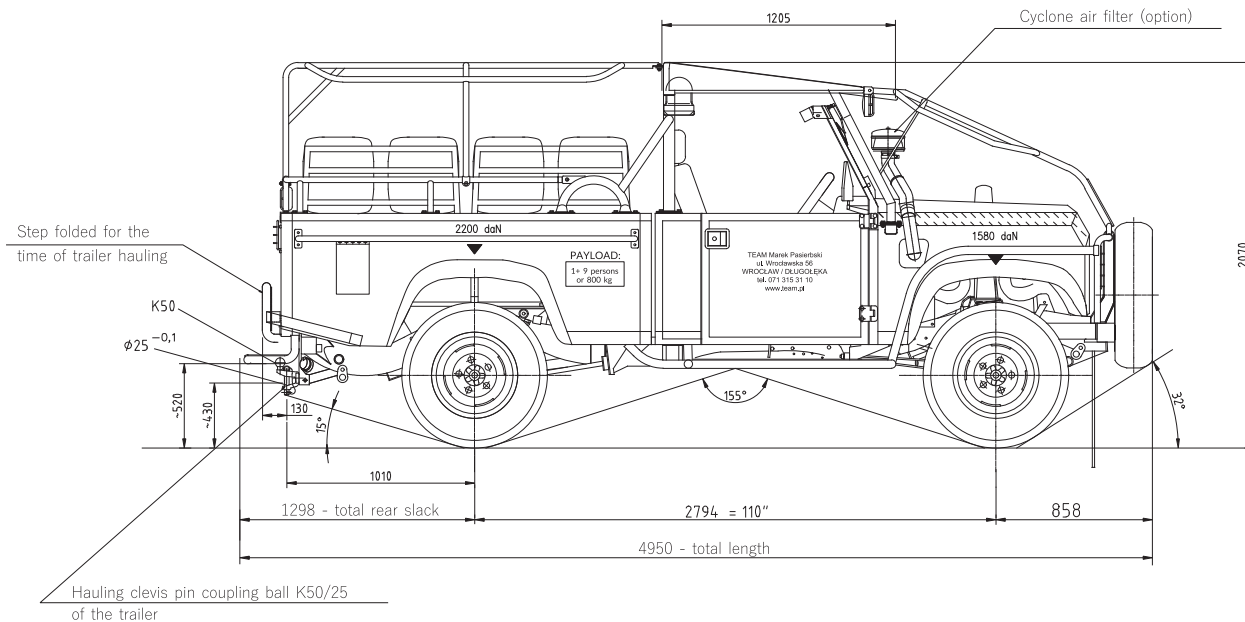
- Rover Group LTD 300 Tdi \*
- Perkins Engines Company 1104D-44TA
- Perkins Engines Company 904J-E36TA (Stage V)
- Electric drive \*\*

\* Till run out of reserves

\*\* Introduction in 2020 year.







## FIELD OF APPLICATION

For transport of people and materials:

- 9 persons + operator
- 800 kg of auxiliary materials

For transport of explosives:

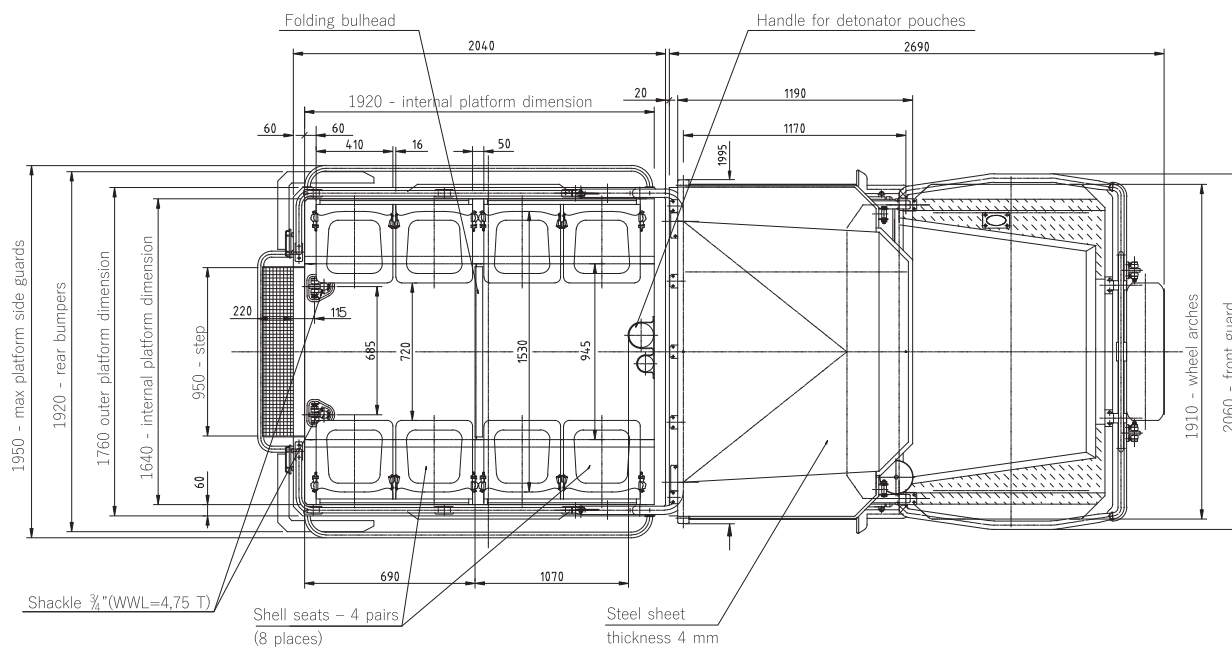
- 800 kg of explosives or
- 5000 units of detonators, or
- 3000 running metres of detonation cord, or
- 250 kg explosives and/or 150 units of detonators and/or 100 running meters of detonation cord and/or 100 kg of firing activators

For trailer hauling:

- trailer without overrunning brake, with weight up to 750 kg
- trailer with overrunning brake, with weight up to 1500 kg

## OPTIONAL EQUIPMENT:

- automatic gearbox Alisson 1000SP with Perkins engines
- airconditioned operator's cabin
- airconditioned, closed transport platform
- closed transport platform- soft top
- closed transport platform- hard top
- Operator's records system
- towing hook with electric installation
- multi discs wet brakes
- emergency-parking disc brake
- lap and shoulder safety belts in operator's cabin
- warning lamp during passing through resilient dams



# SWT-TEAM 10/1,9

## TECHNICAL PARAMETERS

Length: ..... 4900 mm  
Width:..... 1990 mm  
Height: ..... 1900 mm  
Wheelbase: ... 2794 mm  
Track width: .. 1486 mm  
Clearance: ..... 210 mm  
Fording depth: 500 mm  
Approach angle: 32°  
Departure angle: 21°  
Curb weight (with operator): ≈2600 kg (subject to completing)

Technically permissible mass on each axle:

- Max front axle load: 1580 daN
- Max rear axle load: 2200 daN
- Total permissible weight: 3500 kg

Technically permissible towable mass in case of trailer:

- trailer without overrun brake: .. 750 kg
- trailer with overrun brake: ..... 1500 kg

Velocity:

- Max speed: ..... 40 km/h
- transport of people: ..... 25 km/h
- transport of explosives: 10 km/h

Excavation parameters:

- Min excavation width: 4400 mm
- Min excavation height: 2100 mm
- Max longitudinal excavation slope: 8°
- Max transverse excavation slope: 5°

Number of carried people: 9 persons + operator

Available engines:

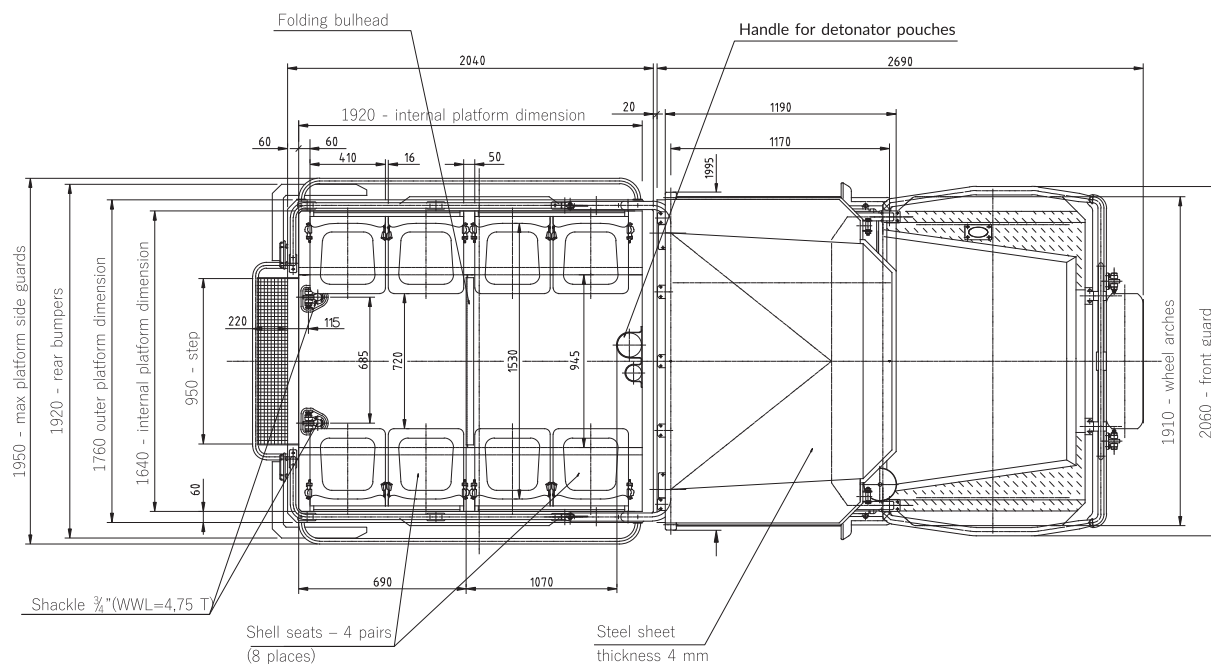
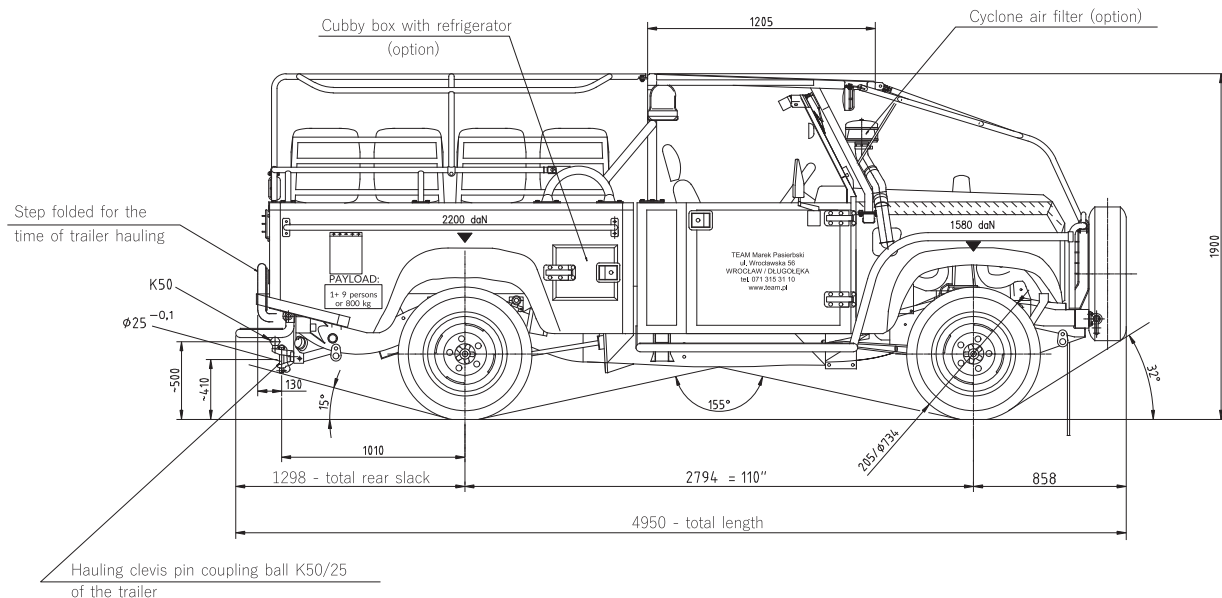
- Rover Group LTD 300 Tdi \*
- Perkins Engines Company 1104D-44TA
- Perkins Engines Company 904J-E36TA (Stage V)
- Electric drive \*\*

\* Till run out of reserves

\*\* Introduction in 2020 year.







## FIELD OF APPLICATION

For transport of people and materials:

- 9 persons + operator
- 800 kg of auxiliary materials

For transport of shot firer agents:

- 800 kg of explosives, or
- 5000 units of detonators, or
- 3000 running meters of detonation cord, or
- 250 kg of explosives and/or 150 units of detonators and/or 100 running meters of detonation cord and/or 100 kg of firing activators

For trailer hauling:

- trailer without overrunning brake, of a weight up to 750 kg
- trailer with overrunning brake, of a weight up to 1500 kg

## OPTIONAL EQUIPMENT

- automatic gearbox Alisson 1000SP with Perkins engine
- airconditioned operator's cabin
- airconditioned, closed transport platform
- closed transport platform - soft top
- closed transport platform - hard top
- Operator's records system
- tow hook with electric installation
- multi discs wet brakes
- emergency-parking disc brake
- lap and shoulder safety belts in operator's cabin
- warning lamp during passing through resilient dams
- refrigerator fitted in the side of transport platform, for 6 bottles ea. 1,5 l
- system of pneumatic cushions Air Lift 1000 in front suspension

Vehicle is developed version of SWT-TEAM 10 model. It is version of decreased vehicle gauge height, what enables to move in lower excavations of mining plants.

# SWT-TEAM 10/1,9/A

## TECHNICAL PARAMETERS

Length: ..... 4900 mm  
Width: ..... 1990 mm  
Height: ..... 1900 mm  
Wheelbase: ... 2794 mm  
Track width: .. 1486 mm  
Clearance: ..... 210 mm  
Fording depth: 500 mm  
Approach angle: 32°  
Departure angle: 21°  
Curb weight (with operator): ≈2600 kg (subject to completing)

Technically permissible mass on each axle:

- Max front axle load: 1580 daN
- Max rear axle load: 2200 daN
- Total permissible weight: 3500 kg

Technically permissible towable mass in case of trailer:

- trailer without overrun brake: .. 750 kg
- trailer with overrun brake: ..... 1500 kg

Velocity:

- Max speed: ..... 40 km/h
- during transport of people: ..... 25 km/h
- during transport of shot firer agents: 10 km/h

Excavation parametres:

- Min excavation width: 4400 mm
- Min excavation height: 2100 mm
- Max longitudinal excavation slope: 15°
- Max transverse excavation slope: 8°

Number of carried people: 9 persons + operator

Available engines:

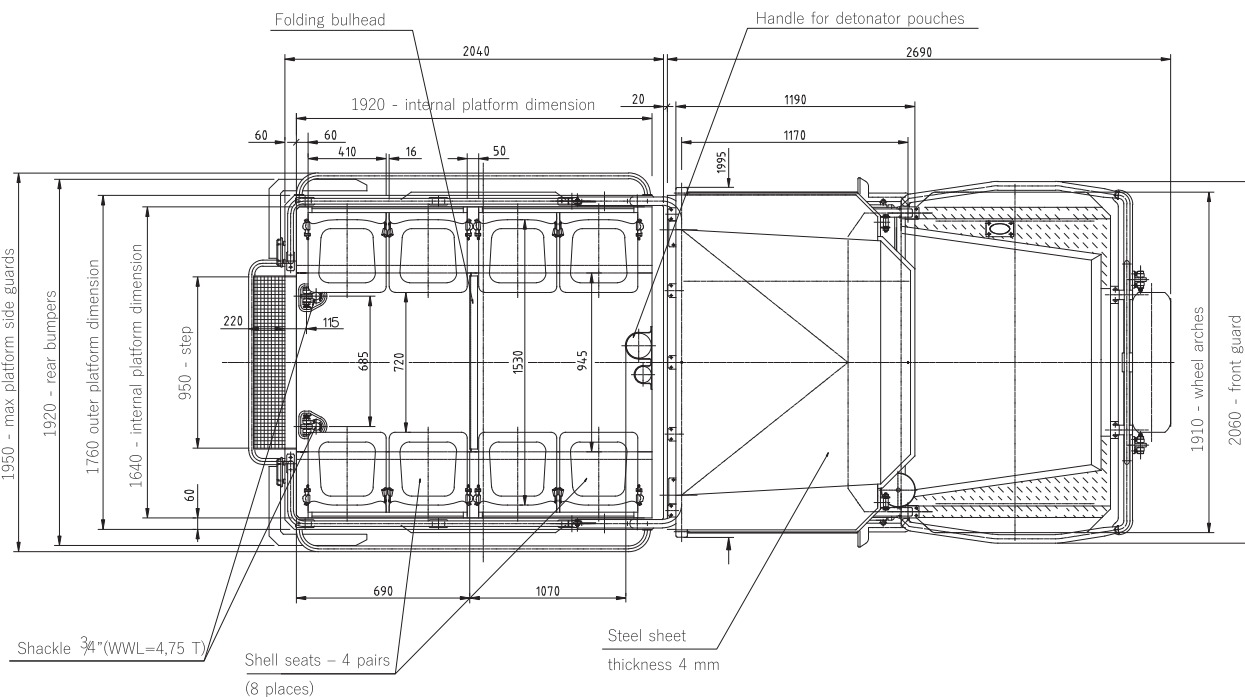
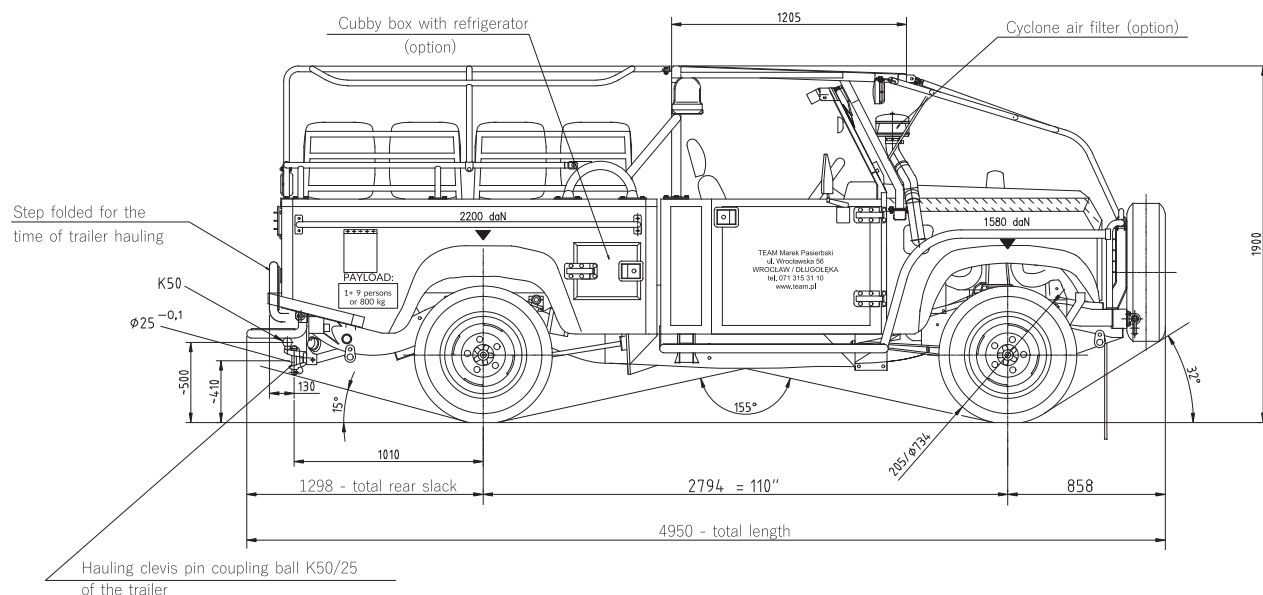
- Rover Group LTD 300 Tdi \*
- Perkins Engines Company 1104D-44TA
- Perkins Engines Company 904J-E36TA (Stage V)
- Electric drive \*\*

\* Till run out of reserves

\*\* Introduction in 2020 year.







## FIELD OF APPLICATION

For transport of people and materials:

- 9 persons + operator
- 800 kg of auxiliary materials

For transport of shot firer agents:

- 800 kg of explosives, or
- 5000 units of detonators, or
- 3000 running meters of detonation cord, or
- 250 kg of explosives and/or 150 units of detonators and/or 100 running meters of detonation cord and/or 100 kg of firing activators

For trailer hauling:

- trailer without overrunning brake, of weight up to 750 kg
- trailer with overrunning brake, of weight up to 1500 kg

## OPTIONAL EQUIPMENT:

- automatic gearbox Alisson 1000SP with Perkins engine
- airconditioned operator's cabin
- airconditioned, closed transport platform
- closed transport platform - soft top
- closed transport platform - hard top
- Operator's records system
- tow hook with electric installation
- multi discs wet brakes
- emergency-parking disc brake
- lap and shoulder safety belts in operator's cabin
- warning lamp during passing through resilient dams
- refrigerator fitted in side of transport platform

Vehicle is developed version of SWT-TEAM 10/1,9 model. This version is allowed to be used in excavations of mining plants with higher longitudinal and transverse slopes.

# SWT-TEAM 10/1,9/K

## TECHNICAL CHARACTERISTICS

Length: ..... 4900 mm  
Width: ..... 2250 mm  
Height: ..... 1965 mm  
Wheelbase: .. 2794 mm  
Track width: ..1570 mm  
Clearance: ..... 200 mm  
Fording depth: 500 mm  
Approach angle: 32°  
Departure angle: 21°  
Curb weight (with operator): ≈2800 kg (subject to completing)

Technically permissible mass on each axle:

- Max front axle load: 1580 daN
- Max rear axle load: 2200 daN
- Total permissible weight: 3600 kg

Technically permissible towable mass in case of trailer:

- trailer without overrun brake: 750 kg
- trailer with overrun brake: 1500 kg

Velocity:

- Max speed (300 Tdi engine): ..... 40 km/h
- Max speed (Perkins engines): ..... 25 km/h
- during transport of people: ..... 25 km/h
- during transport of shot firer agents: 10 km/h

Excavation parametres:

- Min excavation width: 4400 mm
- Min excavation height: 2170 mm
- Max longitudinal excavation slope: 15°
- Max transverse excavation slope: 8°

Number of carried people: 9 person + operator

Available engines:

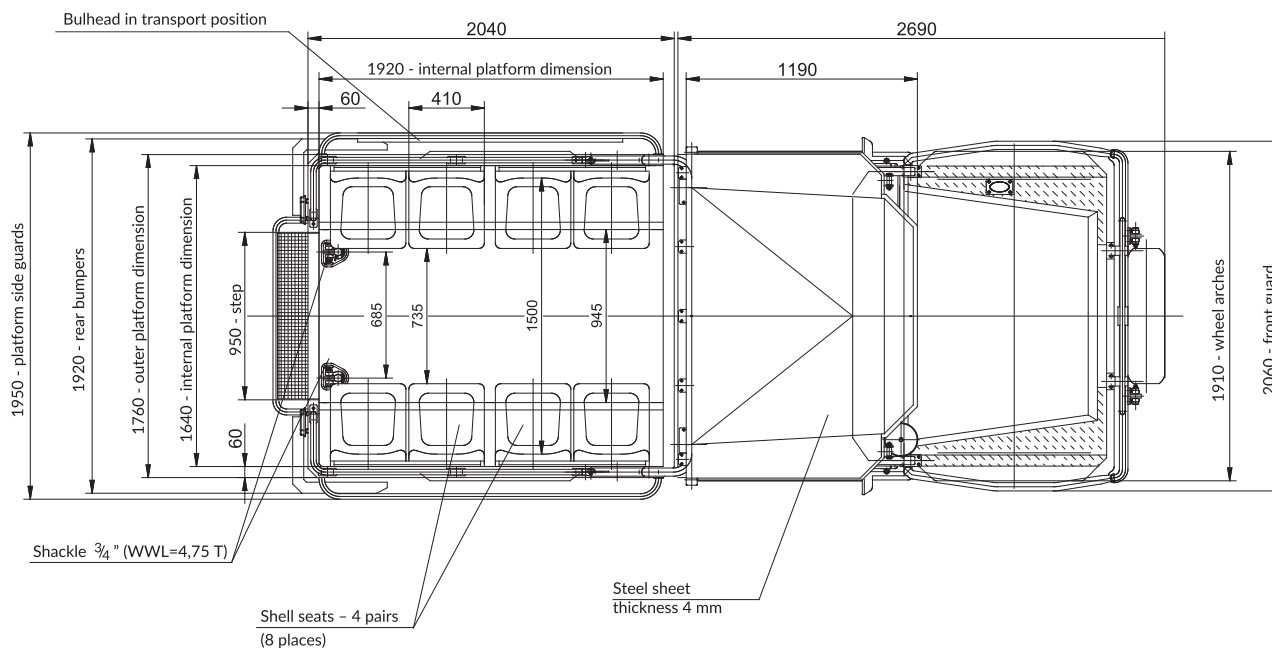
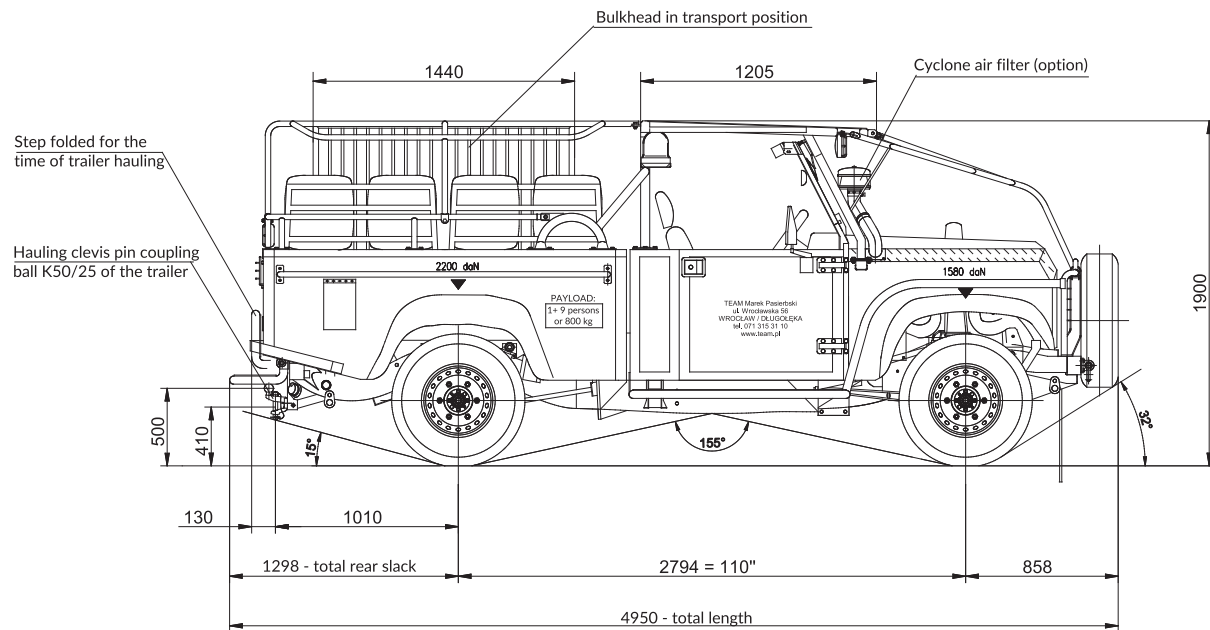
- Rover Group LTD 300 Tdi \*
- Perkins Engines Company 1104D-44TA
- Perkins Engines Company 904J-E36TA (Stage V)
- Electric drive \*\*

\* Till run out of reserves

\*\* Introduction in 2020 year.







## FIELD OF APPLICATION

For transport of people and materials:

- 9 persons + operator
- 800 kg of auxiliary materials

For transport of shot firer agents:

- 800 kg of explosives, or
- 5000 units of detonators, or
- 3000 running meters of detonation cord, or
- 400 kg of explosives and/or 200 units of detonators and/or 200 running meters of detonation cord and/or 100 kg of firing activators

For trailer hauling:

- trailer without overrunning brake, of a weight to 750 kg
- trailer with overrunning brake, of a weight up to 1500 kg

## OPTIONAL EQUIPMENT:

- automatic gearbox Alisson 1000SP with Perkins engines
- airconditioned operator's cabin
- airconditioned, closed transport platform
- closed transport platform- soft top
- closed transport platform- hard top
- Operator's records system
- tow hook with electric installation
- emergency-parking disc brake
- lap and shoulder safety belts in operator's cabin
- warning lamp during passing through resilient dams

Vehicle is developed version of SWT-TEAM 10/1,9 model.

This version is adjusted to requirements of salt mines.

Among others in vehicle was put in place special bulkhead that separates explosives from detonators. Bulkhead is fitted to side of transport platform during transport of people. In vehicles are also used reinforced drive axles with differential blockades.

# SWT-TEAM 10/1,9/KT/A

## TECHNICAL CHARACTERISTICS

Length: ..... 4950 mm  
Width: ..... 2060 mm  
Height: ..... 1900 mm  
Wheelbase: ..... 2794 mm  
Track width (standard axles): 1385 mm  
Track width (reinforced axles): 1570 mm  
Clearance: 210 mm  
Fording depth: ..... 400 mm  
Approach angle: 32°  
Departure angle: 21°  
Curb weight (with operator): ≈3300 kg (subject to completing)

Technically permissible mass on each axle:

- Max front axle load: 1580 daN
- Max rear axle load: 2200 daN
- Total permissible weight: 3600 kg

Velocity:

- Max speed: ..... 40 km/h
- Max speed (Perkins engines with reinforced axles): 25 km/h
- During transport of people: ..... 25 km/h

Excavation parameters:

- Min excavation width: 4000 mm
- Min excavation height: 2100 mm
- Max longitudinal excavation slope: 15°
- Max transverse excavation slope: 8°

Number of transported people: 7 persons + operator

Available engines:

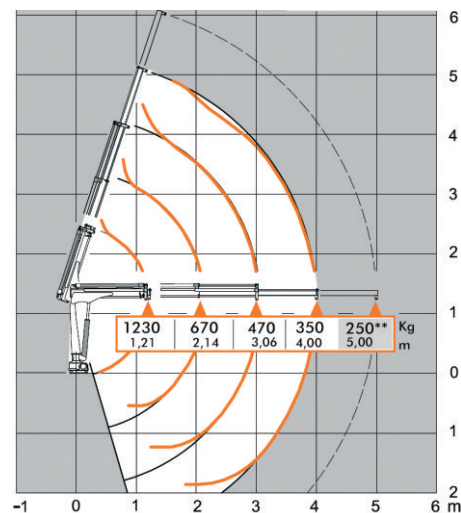
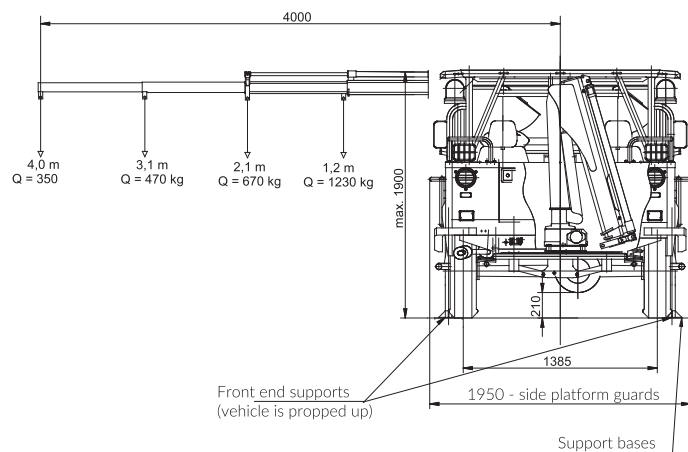
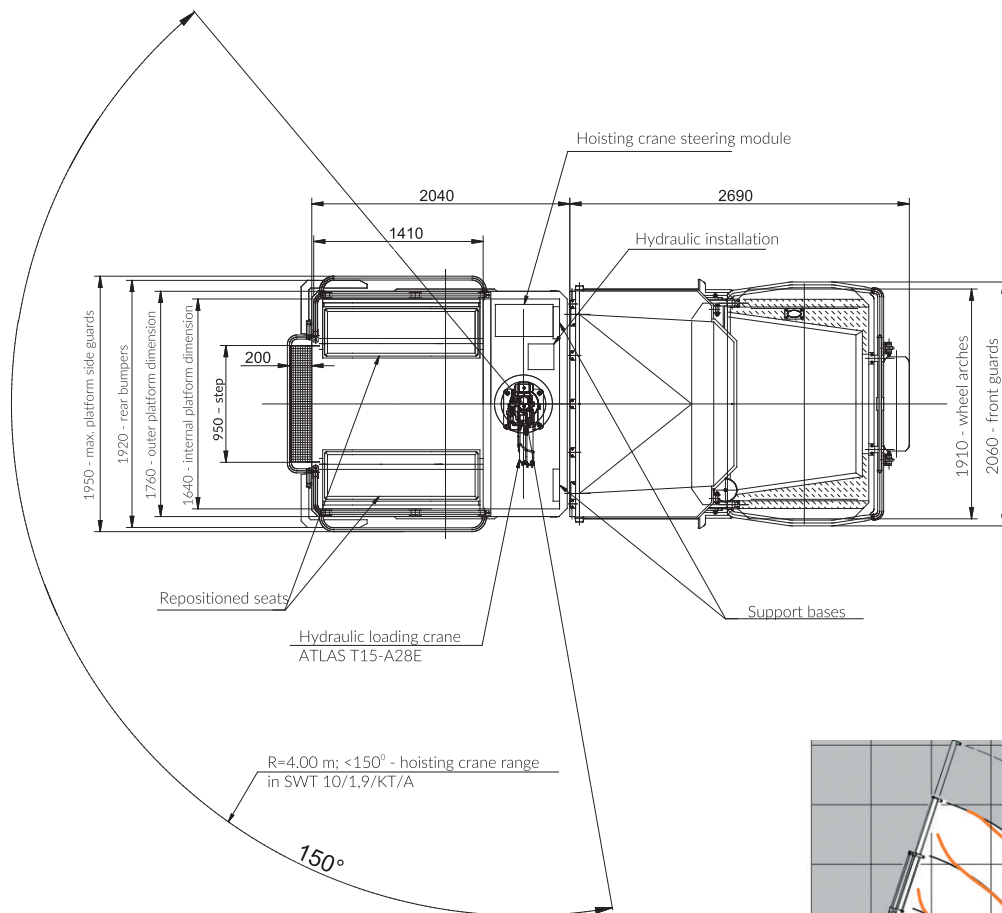
- Rover Group LTD 300 Tdi \*
- Perkins Engines Company 1104D-44TA
- Perkins Engines Company 904J-E36TA (Stage V)
- Electric drive \*\*

\* Till run out of reserves.

\*\* Introduction in 2020 year.







## VEHICLE APPLICATION

For transport of people and materials:

- 7 persons + operator
- 800 kg of auxiliary materials

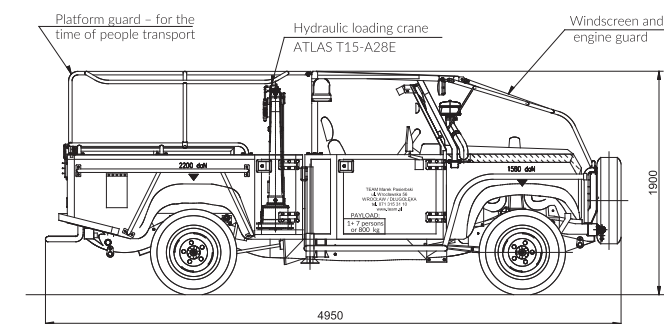
## HOISTING CRANE OPERATING PARAMETRES

- Maximum hoisting torque: 14 kNm
- Maximum hoisting force: 1230 kg
- Maximum range: 4 m
- Rotation angle: 150 °

## OPTIONAL EQUIPMENT:

- automatic gearbox Alisson 1000SP with Perkins engines
- airconditioned operator's cabin
- Operator's records system
- emergency-parking disc brake
- lap and shoulder safety belts in operator's cabin
- warning lamp during passing through resilient dams
- reinforced drive axles with differential blockades
- electric winch Tigershark TS11000 fitted in front and rear of the vehicle

Vehicle is developed version of SWT-TEAM 10/1,9 model. On transport platform in its front part is fitted a T15 type hydraulic loading crane. Crane is supplied from 12 V vehicle installation.



# SWT-TEAM 14

## TECHNICAL CHARACTERISTICS

Length: ..... 5850 mm  
Width: ..... 2250 mm  
Height: ..... 2100 mm  
Wheelbase: ... 3226 mm  
Track width: .. 1486 mm  
Clearance: ..... 210 mm  
Fording depth: 500 mm  
Approach angle: 32°  
Departure angle: 15°  
Curb weight (with operator): ≈2800 kg (subject to completing)

Technically permissible mass on each axle:

- Max front axle load: 1580 daN
- Max rear axle load: 2200 daN
- Total permissible weight: 3800 kg

Technically permissible towable mass in case of trailer:

- trailer without overrun brake: 750 kg
- trailer with overrun brake: 1500 kg

Velocity:

- Max speed: ..... 40 km/h
- during transport of people: ..... 25 km/h
- during transport of shot firer agents: 10 km/h

Excavation parameters:

- Min excavation width: 4500 mm
- Min excavation height: 2300 mm
- Max longitudinal excavation slope: 8°
- Max transverse excavation slope: 5°

Number of carried people: 13 persons + operator

Available engines:

- Rover Group LTD 300 Tdi \*
- Perkins Engines Company 1104D-44TA
- Perkins Engines Company 904J-E36TA (Stage V)
- Electric drive \*\*

\* Till run out of reserves.

\*\* Introduction in 2020 year.







# SWT-TEAM 14 - transport-technical version

## TECHNICAL PARAMETERS

Length: ..... 5850 mm  
Width: ..... 2250 mm  
Height: ..... 2100 mm  
Wheelbase: ... 3226 mm  
Track width: 1486 mm  
Clearance: ..... 210 mm  
Fording depth: 500 mm  
Approach angle: 32°  
Departure angle: 15°  
Curb weight (with operator): ≈3000 kg (subject to completing)

Technically permissible mass on each axle:

- Max front axle load: 1580 daN
- Max rear axle load: 2200 daN
- Total permissible weight: 4000 kg

Velocity:

- Max speed: ..... 40 km/h
- during transport of people: 25 km/h

Excavation parameters:

- Min excavation width: 4500 mm
- Min excavation height: 2300 mm
- Max longitudinal excavation slope: 8°
- Max transverse excavation slope: 5°

Number of carried people: 9 persons + operator

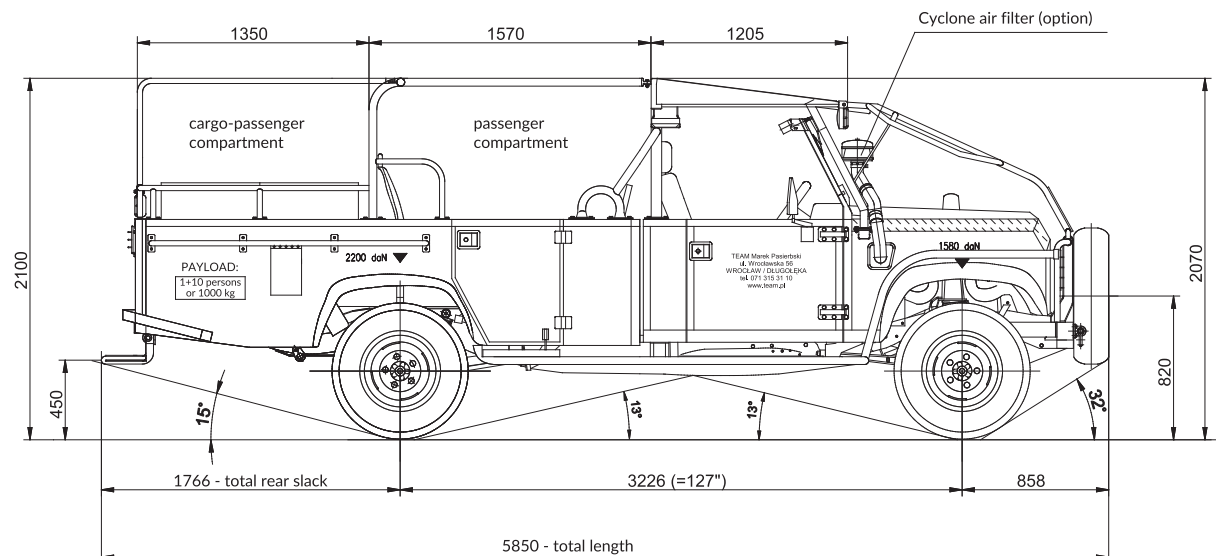
Available engines:

- Rover Group LTD 300 Tdi \*
- Perkins Engines Company 1104D-44TA
- Perkins Engines Company 904J-E36TA (Stage V)
- Electric drive \*\*

\* Till run out of reserves.

\*\* Introduction in 2020 year.





## FIELD OF APPLICATION

For transport of people and materials:

- 10 persons + operator
- 1000 kg of auxiliary materials

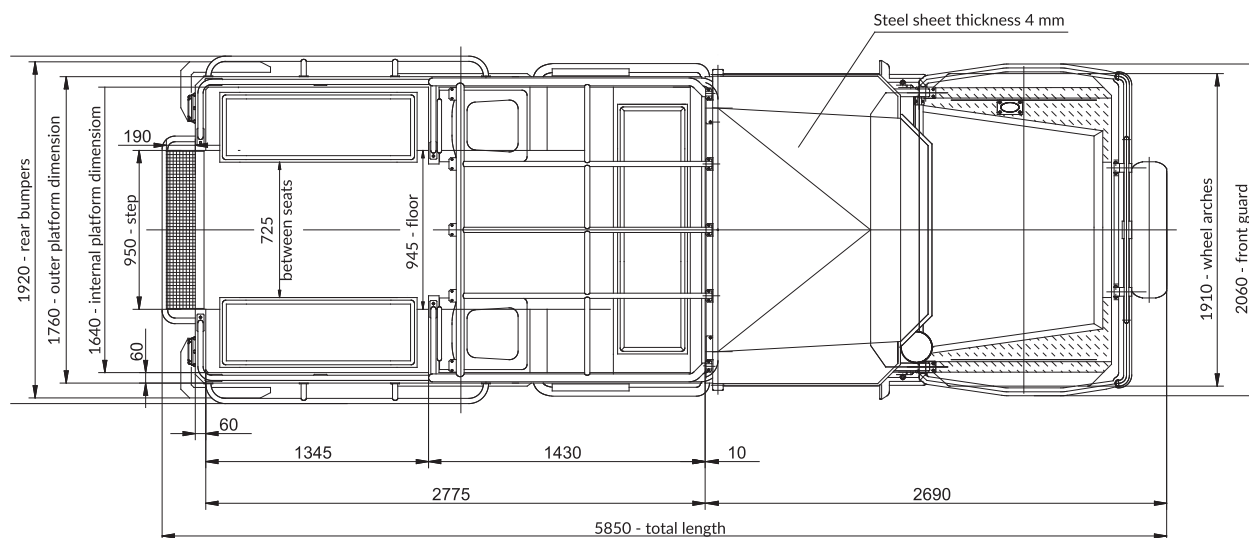
## OPTIONAL EQUIPMENT :

- automatic gearbox Alisson 1000SP with Perkins engines
- airconditioned operator's cabin
- Operator's records cabin
- multi discs wet brakes
- emergency-parking disc brake
- lap and shoulder safety belts in operator's cabin
- warning lamp during passing through riliant dams

Vehicle is developed version of SWT-TEAM 14 model.

Transport - technical version is destined for transport of people, equipment and materials exluding shot firer agents and gas cylinders.

Transport platform was divided into two compartments: front passenger and rear cargo -passenger one. In passenger compartment there is folded bench for three persons and two regular seats. In cargo-passenger compartment there are two folded benches for two persons. On both sides of transport platform there are additional entrance doors.



# SWT-TEAM 14 - 5 persons version

## TECHNICAL CHARACTERISTIC

Length: ..... 5850 mm  
Width: ..... 2250 mm  
Height: ..... 2100 mm  
Wheelbase: ... 3226 mm  
Track width: ...1486 mm  
Clearance: ..... 210 mm  
Fording depth: 500 mm  
Approach angle: 32°  
Departure angle: 15°  
Curb weight (with operator): ≈3000 kg (subject to completing)

Technically permissible mass on each axle:

- Max front axle load: 1580 daN
- Max rear axle load: 2200 daN
- Technically permissible weight: 4000 kg

Technically permissible towable mass in case of trailer:

- trailer without overrun brake: 750 kg
- trailer with overrun brake: 1500 kg

Velocity:

- Max speed: ..... 40 km/h
- during transport of people: ..... 25 km/h
- during transport of shot firer agents: 10 km/h

Excavation parametres:

- Min excavation width: 4500 mm
- Min excavation height: 2300 mm
- Max longitudinal excavation slope: 8°
- Max transverse excavation slope: 5°

Number of carried people : 4 persons + operator

Available engines:

- Ford Motor Company DT224\*
- Perkins Engines Company 1104D-44TA
- Perkins Engines Company 904J-E36TA (Stage V)
- Electric drive \*\*

\* Till run out of reserves.

\*\* Introduction in 2020 year.



**TEAM**

TEAM Marek Pasierbski





## FIELD OF APPLICATION

For transport of people and materials:

- 4 persons + operator
- 1000 kg of auxiliary materials

For trailer hauling:

- trailer without overrunning brake, of a weight up to 750 kg
- trailer with overrunning brake, of a weight up to 1500 kg

## OPTIONAL EQUIPMENT:

- automatic gearbox Alisson 1000SP with Perkins engines
- airconditioned operator's cabin
- Operator's records system
- tow hook with electric installation
- multi discs wet brakes
- emergency-parking disc brake
- lap and shoulder safety belts in operator's cabin
- warning lamp during passing through resilient dams

Vehicle is developed version of SWT-TEAM 14 model.

Equipped with five persons, closed cabin.

Cage of cabin meets FOPS requirements , for load 11,6 kJ.

# SWT-TEAM 14/1,9

## TECHNICAL CHARACTERISTICS

Length: ..... 5850 mm  
Width: ..... 2250 mm  
Height: ..... 1900 mm  
Wheelbase: .. 3226 mm  
Track width: 1486 mm  
Clearance: ..... 210 mm  
Fording depth: 500 mm  
Approach angle: 32°  
Departure angle: 15°  
Kerb weight (with operator) : ≈2800 kg (subject to completing)

Technically permissible mass on each axle:

- Max front axle load: 1580 daN
- Max rear axle load: 2200 daN
- Total permissible weight: 3800 kg

Technically permissible towable mass in case of trailer:

- trailer without overrun brake: 750 kg
- trailer with overrun brake: 1500 kg

Velocity:

- Max speed: ..... 40 km/h
- during transport of people: ..... 25 km/h
- during transport of shot firer agents: 10 km/h

Excavation parametres:

- Min excavation width: 4500 mm
- Min excavation height: 2100 mm
- Max longitudinal excavation slope: 8°
- Max transverse excavation slope: 5°

Number of carried people: 13 persons + operator

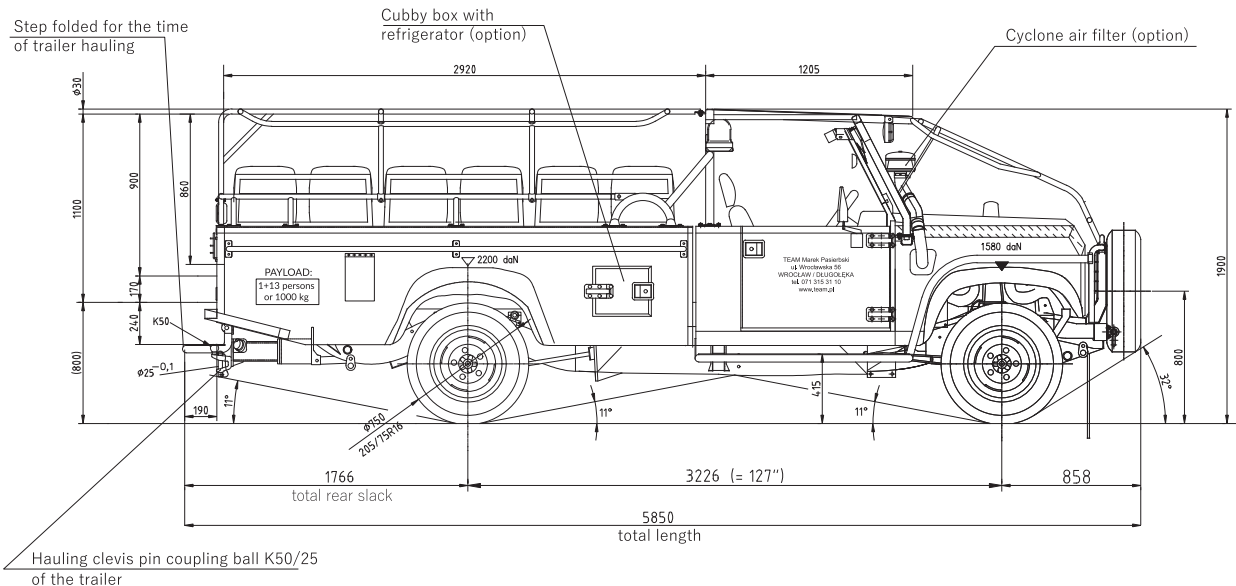
Available engines:

- Rover Group LTD 300 Tdi \*
- Perkins Engines Company 1104D-44TA
- Perkins Engines Company 904J-E36TA (Stage V)
- Electric drive \*\*

\* Till run out of reserves.

\*\* Introduction in 2020 year.





## FIELD OF APPLICATION

For transport of people and materials:

- 13 persons + operator
- 1000 kg of auxiliary materials

For transport of shot firer agents (figures in brackets for version with solid seats fitted on transport platform):

- 1000 (600) kg of explosives, or
- 5000 units of detonators, or
- 750 (400) kg of explosives and/or 400 (200) units of detonators and/or 100 running meters of detonation cord

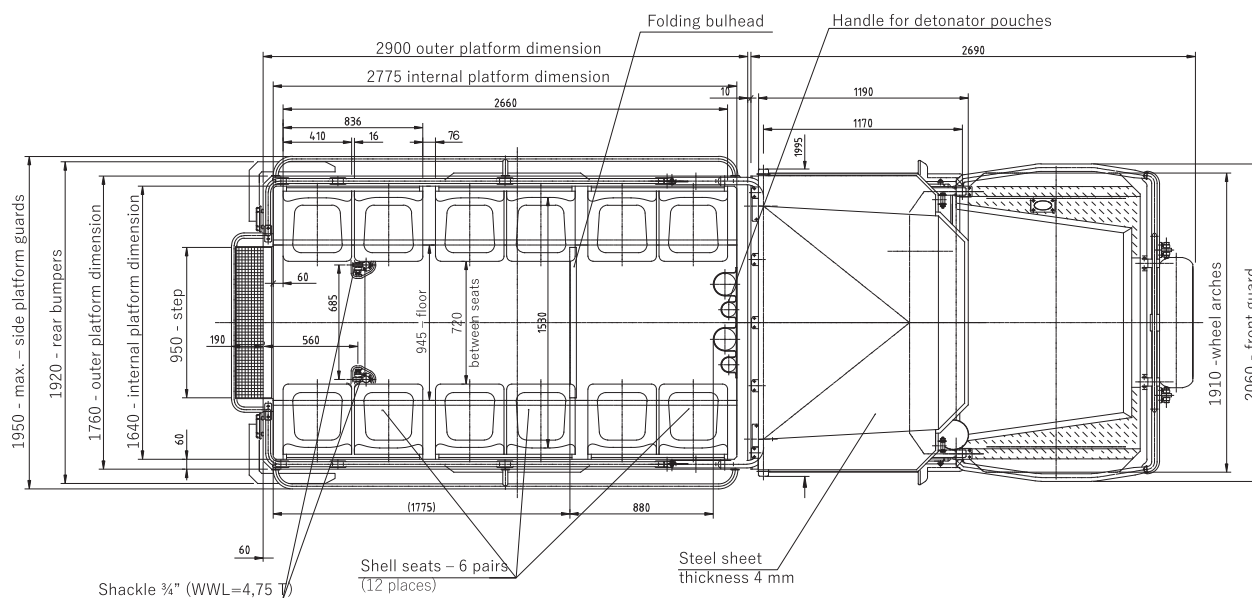
For trailer hauling:

- trailer without overrunning brake, of a weight up to 750 kg
- trailer with overrunning brake, of a weight up to 1500 kg

## OPTIONAL EQUIPMENT:

- automatic gearbox Alisson 1000SP with Perkins engines
- airconditioned operator's cabin
- airconditioned, closed transport platform
- closed transport platform - soft top
- closed transport platform- hard top
- Operator's records system
- tow hook with electric installation
- multi discs wet brakes
- emergency-parking disc brake
- lap and shoulder safety belts in operator's cabin
- warning lamp during passing through resilient dams
- refrigerator fitted in side of transport platform, for 6 bottles a 1,5 l
- folded landing of transport platform

Vehicle is developed version of SWT-TEAM 14 model. It is version of decreased vehicle gauge height, what enables to move in **lower excavations of mining plants.**





# SWT-TEAM 14/1,9/A

## TECHNICAL CHARACTERISTICS

Length: ..... 5850 mm  
Width: ..... 2250 mm  
Height: ..... 1900 mm  
Wheelbase: ...3226 mm  
Track width: 1486 mm  
Clearance: ..... 210 mm  
Fording depth: 500 mm  
Approach angle: 32°  
Departure angle: 15°  
Curb weight (with operator): ≈2800 kg (subject to completing)

Technically permissible mass on each axle:

- Max front axle load: 1580 daN
- Max rear axle load: 2200 daN
- Total permissible weight: 3800 kg

Technically permissible towable mass in case of trailer:

- trailer without overrun brake: 750 kg
- trailer with overrun brake: 1500 kg

Velocity:

- Max speed: ..... 40 km/h
- during transport of people: ..... 25 km/h
- during transport of shot firer agents: 10 km/h

Excavation parameters:

- Min excavation width: 4500 mm
- Min excavation height: 2100 mm
- Max longitudinal excavation slope: 15°
- Max transverse excavation slope: 8°

Number of carried people: 13 persons + operator

Available engines:

- Rover Group LTD 300 Tdi \*
- Perkins Engines Company 1104D-44TA
- Perkins Engines Company 904J-E36TA (Stage V)
- Electric drive \*\*

\* Till run out of reserves.

\*\* Introduction in 2020 year.







# SWT-TEAM 14/1,9/R

## TECHNICAL CHARACTERISTICS

Length: ..... 5850 mm  
Width: ..... 1990 mm  
Height: ..... 1900 mm  
Wheelbase: .. 3226 mm  
Track width: ..1486 mm  
Clearance: ..... 210 mm  
Fording depth: 500 mm  
Approach angle: 32°  
Departure angle: 8°  
Curb weight (with operator): ≈2800 kg (subject to completing)

Technically permissible mass on each axle:

- Max front axle load: 1580 daN
- Max rear axle load: 2200 daN
- Total permissible weight: 3800 kg

Velocity:

- Max speed: 40 km/h

Excavation parameters:

- Min excavation width: 4500 mm
- Min excavation height: 2100 mm
- Max longitudinal excavation slope: 15°
- Max transverse excavation slope: 8°

Number of carried persons: 7 persons + operator

Available engines:

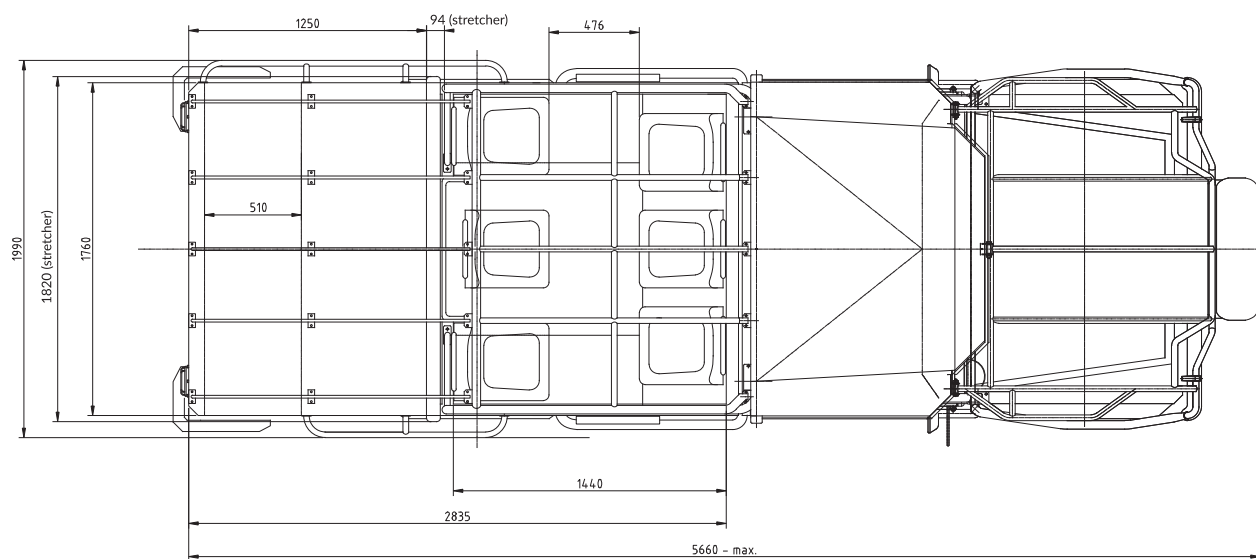
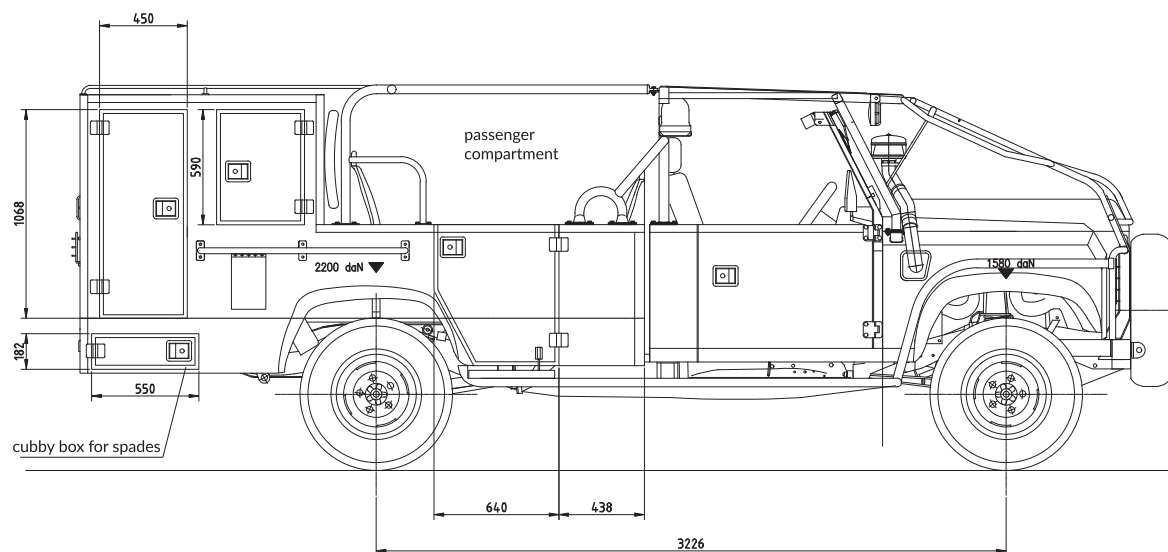
- Rover Group LTD 300 Tdi \*
- Perkins Engines Company 1104D-44TA
- Perkins Engines Company 904J-E36TA (Stage V)
- Electric drive \*\*

\* Till run out of reserves.

\*\* Introduction in 2020 year.







## FIELD OF APPLICATION

For transport of people and materials:

- 7 persons + operator
- 1000 kg of auxiliary materials

## OPTIONAL EQUIPMENT:

- automatic gearbox Alisson 1000SP with Perkins engines
- airconditioned operator's cabin
- Operator's records system
- tow hook with electric installation
- multi discs wet brakes
- emergency-parking disc brake
- lap and shoulder safety belts in operator's cabin

Vehicle is developed version of SWT-TEAM 14/1,9 model.

Model is intended for the Mine Rescue Operation Services in KGHM Polska Miedź S.A. Front part of transport platform is intended for transport of 6 rescuers. Access to it facilitate doors from both sides of platform. Rear construction of transport platform consists of two parts. Upper part is used for transport of rescue equipment (container with foaming agent - deteor, nonflammable boxes PELI, coil pipes, electric wires, etc.). Lower part is used for tool transport, such as crowbars, spades, pickaxes, etc. Vehicle is equipped with handles for stretchers, and in driver's cabin there is handle for AED defibrillator.



## TECHNICAL CHARACTERISTICS

Length: ..... 6860 mm  
Width: ..... 2250 mm  
Height: ..... 2100 mm  
Wheelbase: 3226 mm – 1010 mm  
Track width: ..... 1486 mm  
Clearance: ..... 210 mm  
Fording depth: ..... 500 mm  
Approach angle: 32°  
Departure angle: 15°  
Curb weight (with operator): ≈3300 kg (subject to completing)

Technically permissible mass on each axle:

- Max front load axle load: 1580 daN
- Max rear axle load: 2200 daN
- Total permissible weight: 5200 kg

Velocity:

- Max speed: ..... 40 km/h
- during transport of people: ..... 25 km/h
- during transport of shot firer agents: 10 km/h

Excavation parameters:

- Min excavation weight: 4700 mm
- Min excavation height: 2300 mm
- Max longitudinal excavation slope: 8°
- Max transverse excavation slope: 5°

Number of carried people: 19 persons + operator

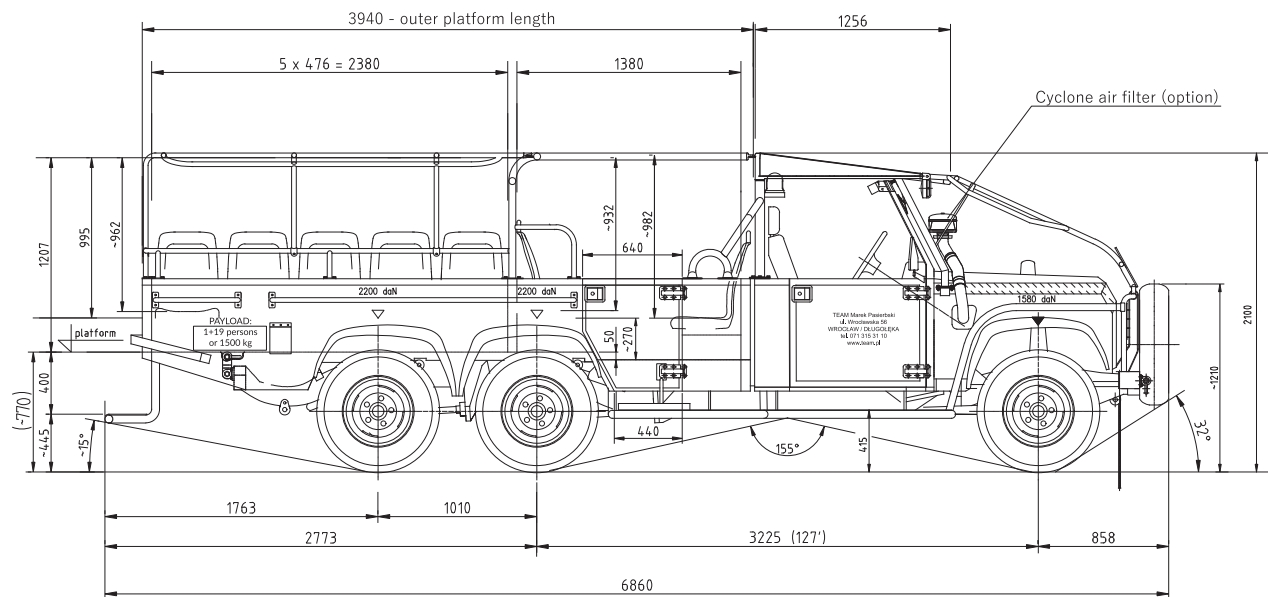
Available engines:

- Rover Group LTD 300 Tdi \*
- Perkins Engines Company 1104D-44TA
- Perkins Engines Company 904J-E36TA (Stage V)
- Electric drive \*\*

\* Till run out of reserves.

\*\* Introduction in 2020 year.





## FIELD OF APPLICATION

For transport of people and materials:

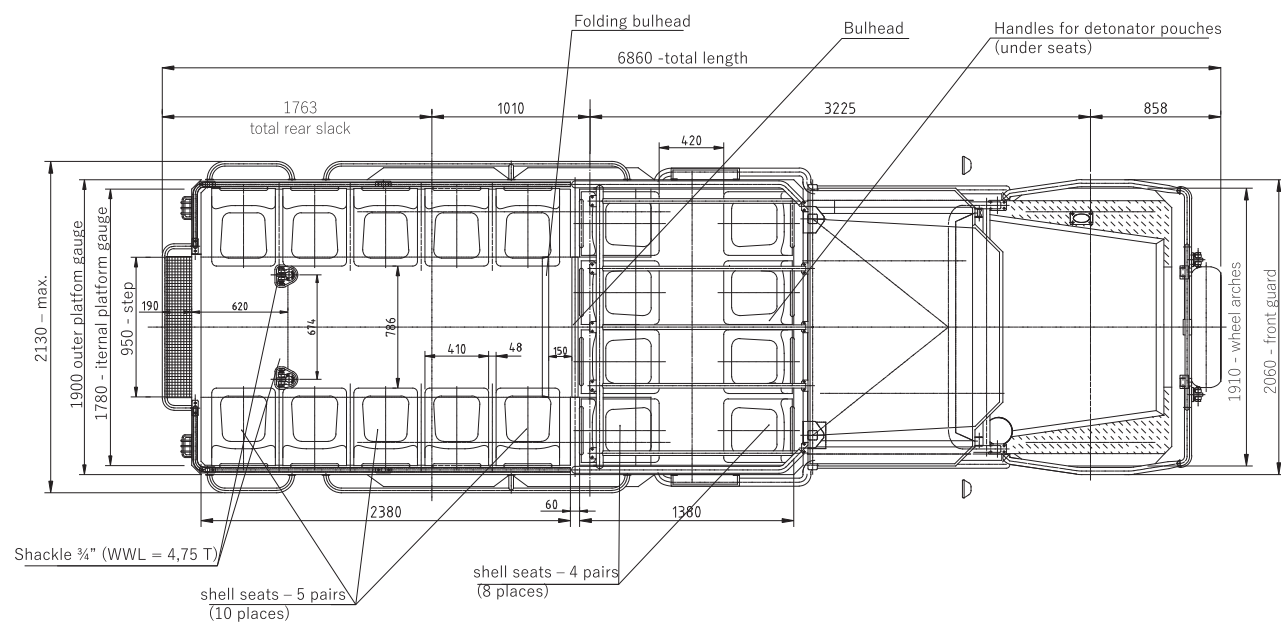
- 19 persons + operator
- 1500 kg of auxiliary materials

For transport of shot firer agents:

- 1000 kg of explosives, or
- 5000 units of detonators, or
- 750 kg of explosives and/or 400 units of detonators and/or 100 running meters of detonation cord

## OPTIONAL EQUIPMENT:

- automatic gearbox Alisson 1000SP with Perkins engines
- airconditioned operator's cabin
- Operator's records system
- multi discs wet brakes
- emergency-parking disc brake
- lap and shoulder safety belts in operator's cabin
- warning lamp during passing through resilient dams





## TECHNICZNA CHARACTERISTICS

Length: ..... 6900 mm  
Width: ..... 2250 mm  
Height: ..... 1900 mm  
Wheelbase: 3226 mm – 1010 mm  
Track width: ..... 1486 mm  
Clearance: ..... 210 mm  
Fording depth: ..... 500 mm  
Approach angle: 32°  
Departure angle: 15°  
Curb weight (with operator): ≈3300 kg (subject to completing)

Technically permissible mass on each axle:

- Max front axle load: 1580 daN
- Max rear axle load: 2200 daN
- Total permissible weight: 5200 kg

Velocity:

- Max speed: ..... 40 km/h
- during transport of people: ..... 25 km/h
- during transport of shot firer agents: 10 km/h

Excavation parametres:

- Min excavation width: 4700 mm
- Min excavation height: 2100 mm
- Max longitudinal excavation slope: 8°
- Max transverse excavation slope: 5°

Number of carried people: 19 persons + operator

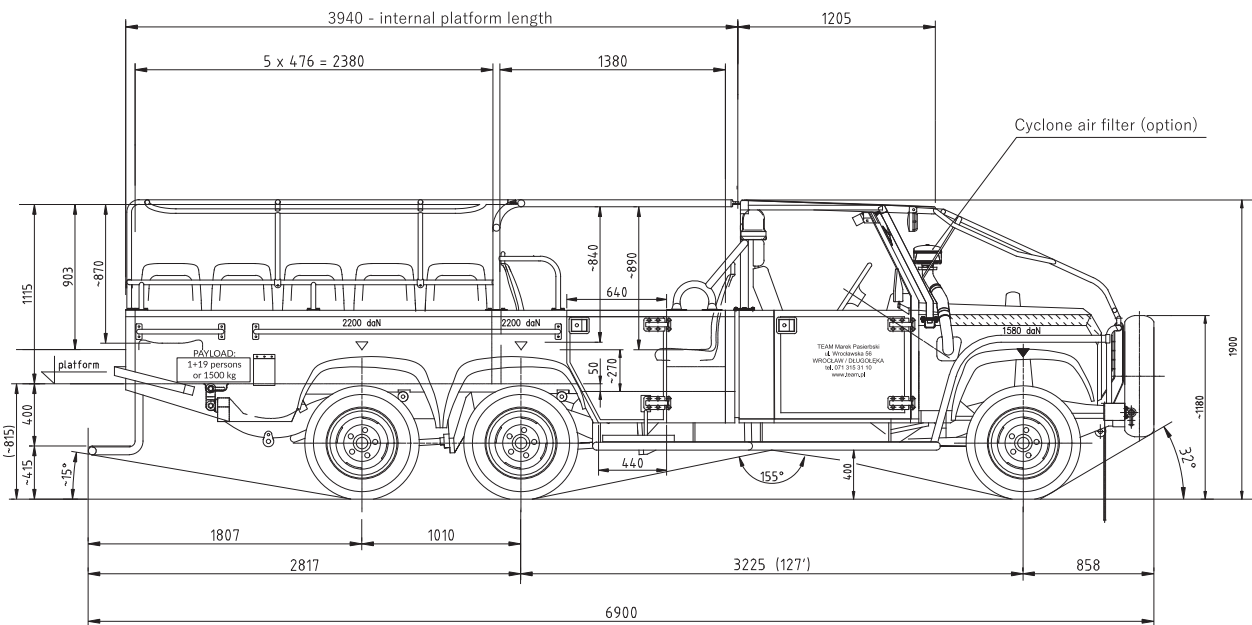
Available engines:

- Rover Group LTD 300 Tdi \*
- Perkins Engines Company 1104D-44TA
- Perkins Engines Company 904J-E36TA (Stage V)
- Electric drive \*\*

\* Till run out of reserves.

\*\* Introduction in 2020 year.





## FIELD OF APPLICATION

For transport of people and materials:

- 19 persons + operator
- 1500 kg of auxiliary materials

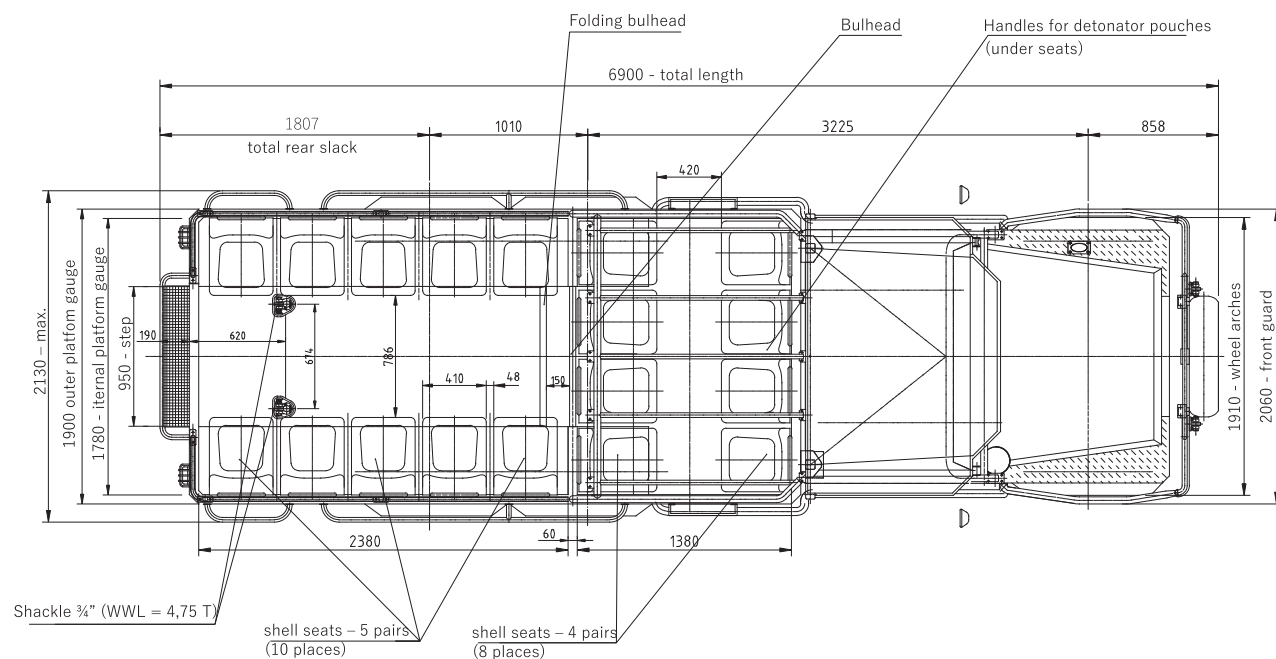
For transport of shot firer agents:

- 1000 kg of explosives, or
- 5000 units of detonators, or
- 750 kg of explosives and/or 400 units of detonators and/or 100 running meters of detonation cord

## OPTIONAL EQUIPMENT:

- automatic gearbox Alisson 1000SP with Perkins engines
- airconditioned operator's cabin
- Operator's records system
- multi discs wet brakes
- emergency-parking disc brake
- lap and shoulder safety belts in operator's cabin
- warning lamp during passing through resilient dams

Vehicle is developed version of SWT-TEAM 20 model. It is version of decreased vehicle gauge height, what enables to move in lower excavations of mining plants.



# SWT-TEAM 20/1,9/PTMK-18

## TECHNICAL CHARACTERISTICS

Length: ..... 8400 mm  
Width: ..... 2430 mm  
Height without work platform basket: 1900 mm  
Height with work platform basket: ..... 1990 mm  
Wheelbase: ..... 3226 mm – 1010 mm  
Track width: ..... 1486 mm  
Clearance: ..... 210 mm  
Fording depth: ..... 500 mm  
Approach angle: 32°  
Departure angle: 6°  
Curb weight (with operator): ≈5400 kg (subject to completing)

Technically permissible mass on each axle:

- Max front axle load: 1760 daN
- Max rear axles load: 2200 daN
- Total permissible weight: 5650 kg

Velocity:

- Max speed: 25 km/h

Excavation parameters (without / with work platform basket):

- Min excavation width: ..... 5150 mm
- Min excavation height: 2100 / 2190 mm
- Max longitudinal excavation slope: 8°
- Max transverse excavation slope: 5°

Number of carried people: 1 person + operator

Available engines:

- Rover Group LTD 300 Tdi \*
- Perkins Engines Company 1104D-44TA
- Perkins Engines Company 904J-E36TA (Stage V)
- Electric drive \*\*

\* Till run out of reserves.

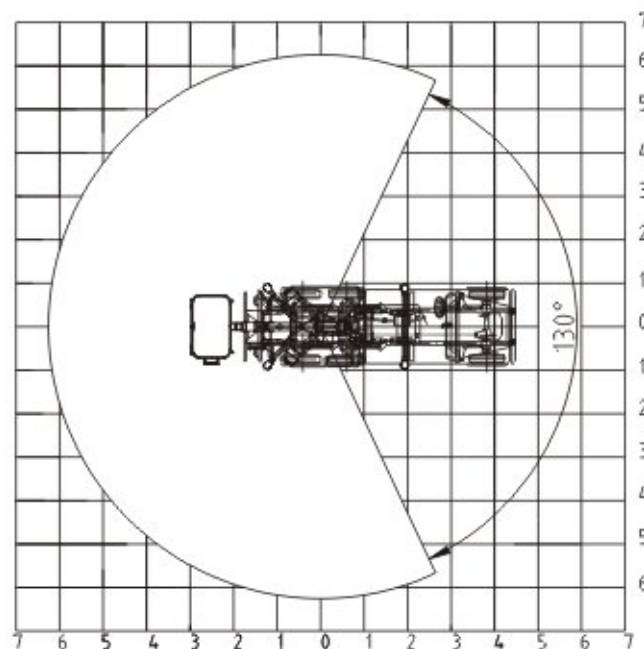
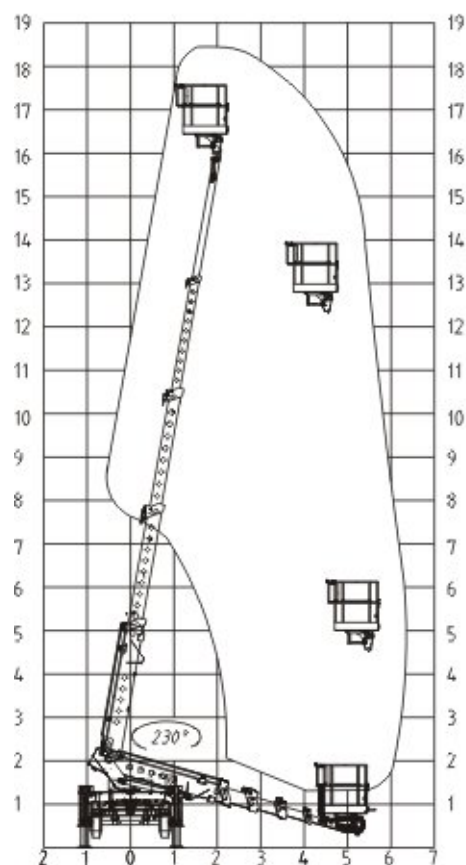
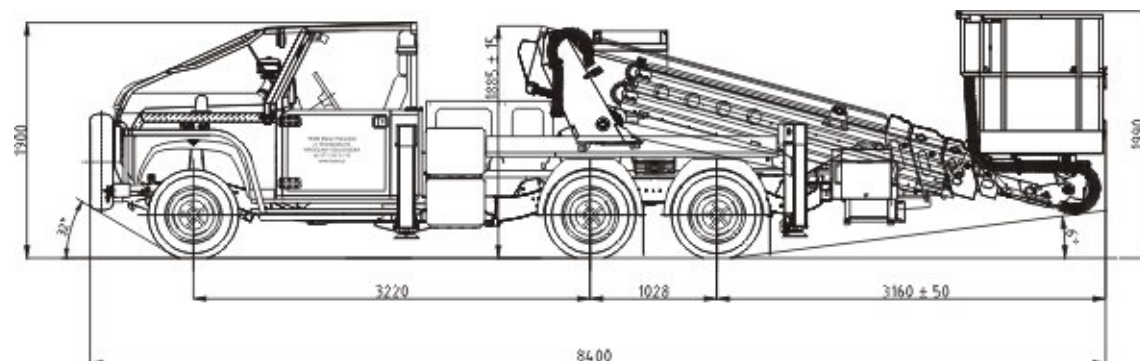
\*\* Introduction in 2020 year.



TEAM

TEAM Marek Pasierbski





## FIELD OF APPLICATION

Height works:

- 1 person + operator
- 250 kg of auxiliary materials

## OPTIONAL EQUIPMENT:

- automatic gearbox Alisson 1000SP with Perkins engines
- airconditioned operator's cabin
- Operator's records system
- multi discs wet brakes
- emergency-parking disc brake
- lap and shoulder safety belts in operator's cabin
- warning lamp during passing through resilient dams

## TECHNICAL CHARACTERISTICS OF PLATFORM

Platform steering: hydraulic from basket and from the level of lower platform part

Basket lifting capacity: 240 kg

Maximum working height: 18 m

Maximum working range: 6,3 m

Time of lifting the extension arm: 45 s

Time of extension of telescopic arm: 60 s

Time of full rotation: 50 s

Working field: 230°

Hydraulic movable platform PTMK-18N was built on SWT-TEAM 20/1,9 chassis. Movable self propelling platform is a lifting device intended for safe height works , installation, control and repairs works at the height up to 18 m. Special platform (basket) has weighting capacity 240 kg. Device has a simple construction, is easy for handling and dependable operation. Hydraulic pump drive works by power take off of vehicle transfer box. Emergency drive of platform is served by hydraulic pump supplied from vehicle 12V electric installation. There are also available versions with platforms of 6 meters and 10 meters lifting height.

# SWT-TEAM 20/1,9/T

## TECHNICAL CHARACTERISTICS

Length: ..... 6900 mm  
Width: ..... 2250 mm  
Height: ..... 1900 mm  
Wheelbase: 3226 mm - 1010 mm  
Track width: ..... 1486 mm  
Clearance: ..... 210 mm  
Fording depth: ..... 500 mm  
Approach angle: 32°  
Departure angle: 15°  
Curb weight (with operator): ≈6080 kg (subject to completing)

Technically permissible mass on each axle:

- Max front axle load: 1900 daN
- Max rear axles load: 2400 daN
- Total permissible weight: 6680 kg

Velocity:

- Max speed: 25 km/h

Excavation parameters:

- Min excavation width: 4700 mm
- Min excavation height: 2100 mm
- Max longitudinal excavation slope: 8°
- Max transverse excavation slope: 5°

Number of carried people: 3 persons + operator

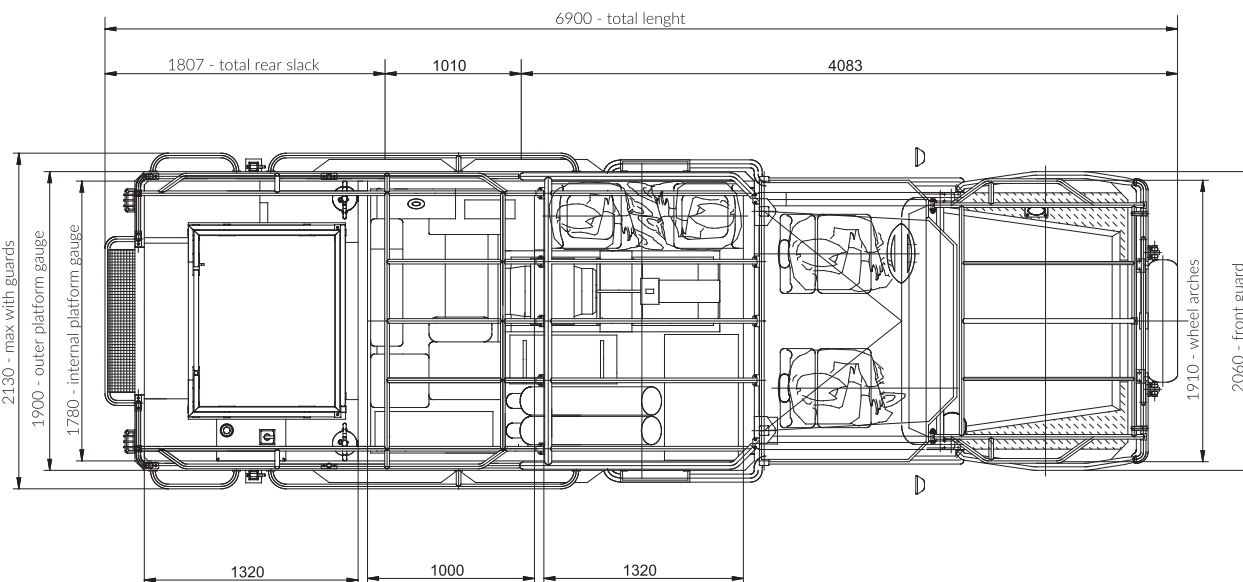
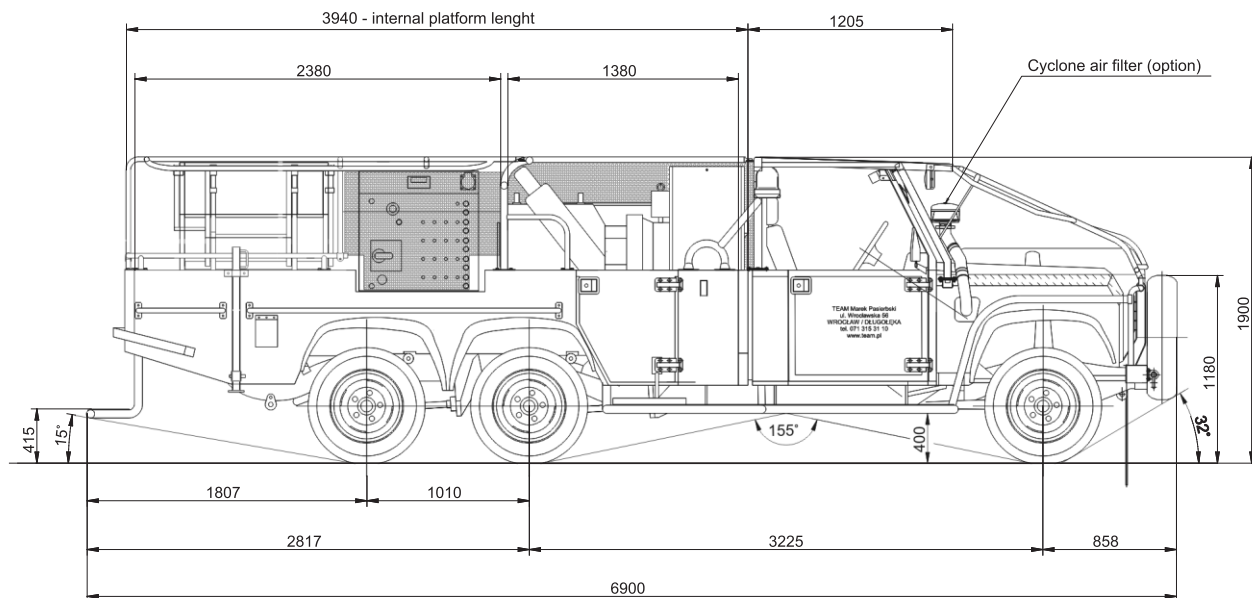
Available engines:

- Rover Group LTD 300 Tdi \*
- Perkins Engines Company 1104D-44TA
- Perkins Engines Company 904J-E36TA (Stage V)
- Electric drive \*\*

\* Till run out of reserves.

\*\* Introduction in 2020 year.





## FIELD OF APPLICATION

Technical vehicle:

- 3 persons + operator
- 600 kg of auxiliary materials

## OPTIONAL EQUIPMENT

- automatic gearbox Alisson 1000SP with Perkins engine
- airconditioned operator's cabin
- Operator's records system
- multi discs wet brakes
- emergency-parking disc brake
- lap and shoulder safety belts in operator's cabin
- warning lamp during passing through resilient dams

Vehicle is developed version of SWT-TEAM 20/1,9 model. It is vehicle worked out for technical services of mining plant. Following equipment was fitted on transport platform:

- engine generator TEAM-SPARK.01 with supply set (230/400/500 V)
- mobile platform ED10125-011/TEAM
- air compressor Mattei ERC 18 L
- inverter welder STEL MAX 503

Vehicle is intended to conduct installation and rebuilding works in excavations of mining plants. During these works employees of technical services can benefit by fitted equipment supplied from generator, thanks to that vehicle's equipment does not need exterior supply. Vehicle is adapted for transport of two gas cylinders of 1,5 meters maximum height each.



# SWT-TEAM 20/1,9/T - generator TEAM-SPARK.01

## TECHNICAL CHARACTERISTICS

Generator weight: 550 kg

Combustion engine capacity: 2216 cm<sup>3</sup>

Mechanical power of combustion engine: 36,7 KM at 1500 rpm

Electric power of generator: 25 kVA

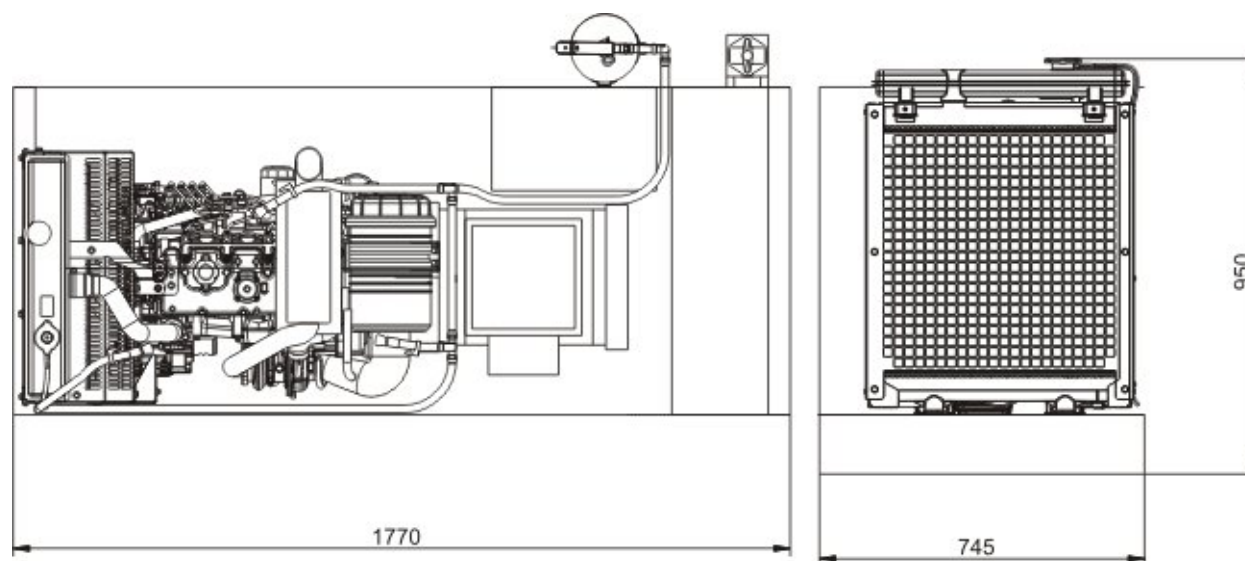
Generator set consists of electrical generator ECP28 L4, supplied by turbo diesel engine 404D-22TG made by Perkins with electronic regulator of engine rotation and supply set ZZWT- 04/500V/400V/230V/4.

Whole set enable the supply of electrical devices fitted in the vehicle and also electrical appliances 230 V of up to 1800 W power.

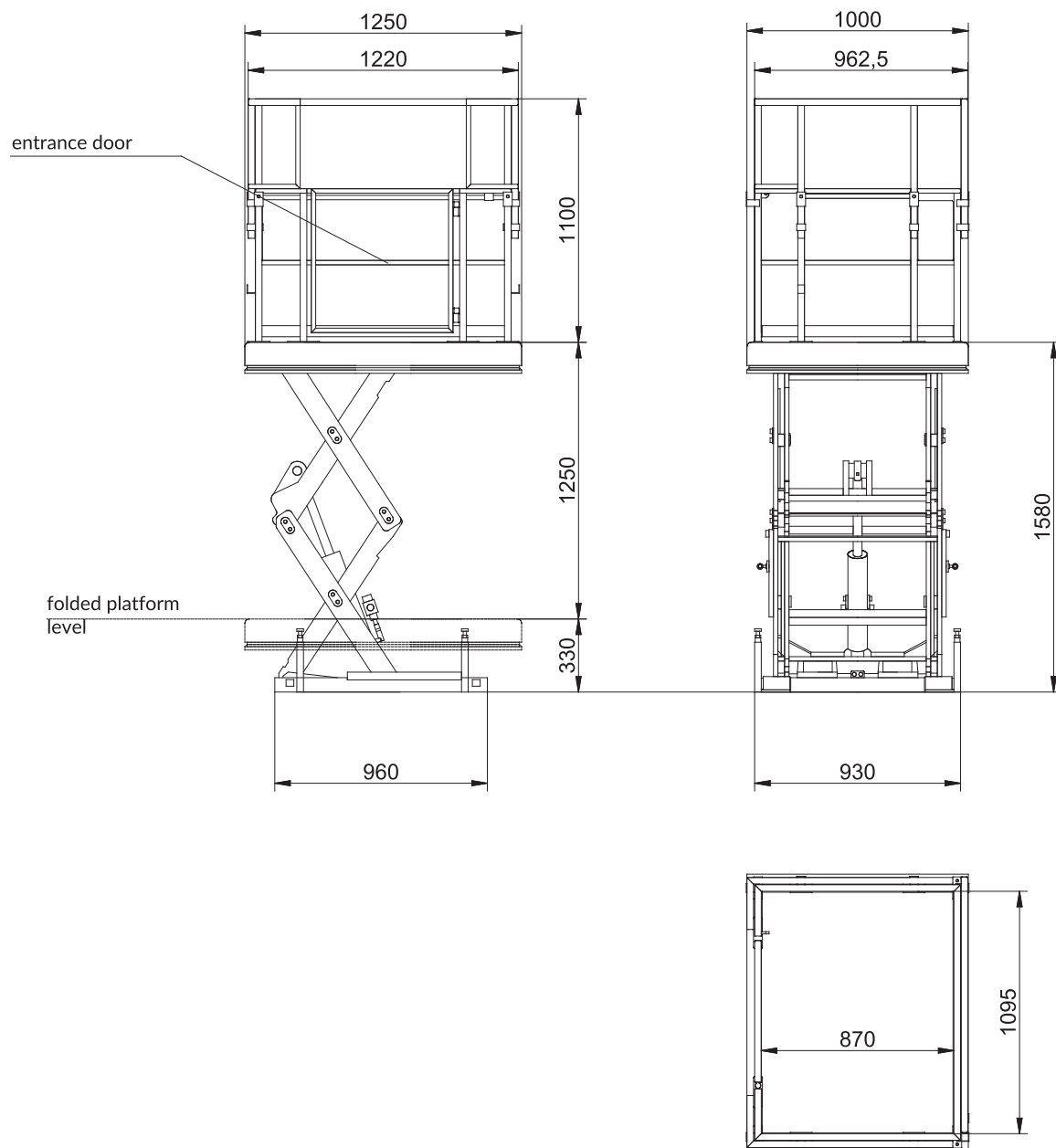
For correct work of whole generator set driver RGK420SA type is responsible. It has a switch on the front panel that serves to switch on the generator's engine, ignition on front panel serving to work the driver and switching off the generator and switches enabling the preview of proper generator's work parameters on LCD data panel.

The generator is equipped with independent set of Permanent Firefighting Installation consisted of dry chemical container of 6 kg firefighting agent, distribution system that delivers dry chemicals from container to diffusers through rigid and flexiles tubes. Diffusers are fitted at: alternator, starter and injection pump.

Generator's engine is supplied from vehicle's SWT-TEAM 20/1,9/T fuel tank.



# SWT-TEAM 20/1,9/T - mobile platform ED10125-011/TEAM



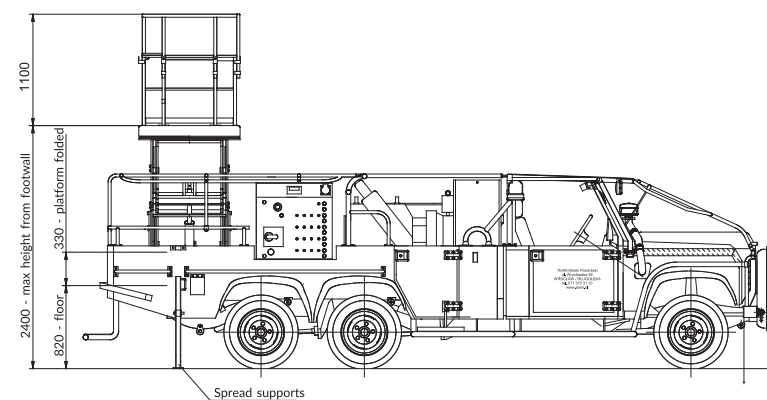
## TECHNICAL CHARACTERISTICS

Generator's weight: 510 kg  
Hydraulic pump drive: electric engine, 400 V  
Working motion drive: hydraulic  
Steering mode: electric, 24 V  
Maximum working height: 4,4 m  
Maximum weighting capacity for the work platform: 900 kg  
Time of lifting: 18 s  
Time of lower down: 17 s

Work platform serves to lift and lower down 2 persons with tools. Platform is hydraulic device powered by hydraulic power supply unit 400 V. Steering takes place only from the platform.

Work platform with dimensions 1220 x 930 mm and 1100 mm height is comfortable work place for two persons. It is made in whole from profiles and steel sheets. It provides good mechanical durability. Platform is built from barrier permanently fitted and three folded barriers. In folded position, SWT-TEAM 20/1,9/T vehicle has total height 1900 mm. With unfolded barriers it keeps platform height at 1100 mm. Platform has doors enabling entrance to basket through rear doors of vehicle.

Due to safety reason platform was equipped with ultrasonic sensor protecting against operator squeezing to the ceiling. In case of descry of collision risk with the ceiling, platform lifting is stopped.



# SWT-TEAM 20/1,9/T - compressor Mattei ERC 18 L

## TECHNICAL CHARACTERISTICS

Compressor weight: 390 kg

Compressor capacity: 3280 l/min

Max air pressure: 8 bar

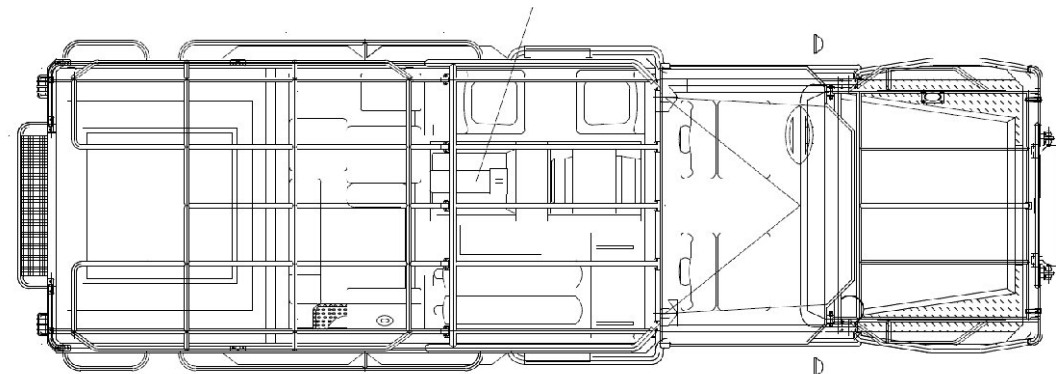
Type of supply: electric engine, 400 V, 18 kW

Compressor is propelled by three phase electric engine 3 x 400 V, clutch connected. Compressor presses the air through the set rotor bar - stator. The rotor bar eccentrically fitted has blades that keep contact with interior surface of the stator through centrifugal force produced by rev.

It is compression phase during rotor's rev caused by the gradually volume decreasing between neighbouring blades, the rotor and the stator. Negative pressure generated by stator, rotor and blades causes that air is compressed in constant not pulse way.

Compressor has compressed air cooler and thanks to that temperature of compressed air outlet is a little higher than temperature of setting. It limits the preheating of pneumatic devices supplied from the compressor.

Air compressor ERC 18 L





# SWT-TEAM 20/1,9/T - walder STEL MAX 503



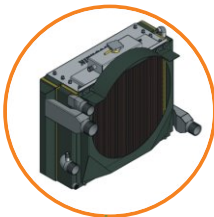
## TECHNICAL CHARACTERISTICS

Power supply voltage: 500 V  
Frequency: 50 / 60 Hz  
Max supply power: 30,8 A  
Rated current drawn from network P 60 %: 23,2 A  
Rated current drawn from network P 100 %: 20 A  
Max rated power: 25,3 kVA  
Rated power P 60 %: 20,6 kVA  
Rated power P 100 %: 15,7 kVA  
Idle run voltage: 20 V  
Adjustment range of arc voltage: (20,16 – 40) V  
Setting range of welding current: (4 – 500) A

Welder MAX 503 is the welding inverter source designed in that way to have protection level IP54.  
Is destined for MMA method welding (coated electrode welding), all kinds of electrodes (cellulose, low hydrogen, rutile, aluminium, inox). Welder is allowed for the use in mining plants.

# Optional equipment of SWT-TEAM vehicles

Cooling system adopted to high concentration of sulphur compounds



Wet closed multidiscs brake system



Operator's records system



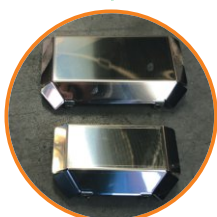
Seats of increased durability



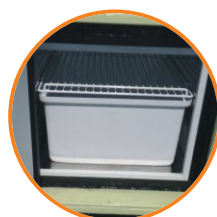
Handles for lifting with use of the travelling crane



Handles for lifting with use of the crane.



Brake clamps casings resistant for negative action of oils and grease.



Refrigerator destined for transport and cooling of 6 bottles of water ea. 1,5 l



Emergency-parking disc brake



Ball pin tow hook with electric installation





Currently manufactured series of types is marked with the symbol SWT -TEAM 10/14/20 where  
**SWT** – means Self Propelling Vehicle  
**TEAM** – element of the name of manufacturer  
**10/14/20** – number of transported people

Attention: figures given in brackets concern optional version of vehicle with permanent seats of increased durability.

	SWT TEAM 10	SWT TEAM 14	SWT TEAM 20
<b>Main measurements and technical parameters</b>			
Length	4900 mm	5850 mm	6900 mm
Width	1990 mm	2250 mm	2250 mm
Height	2100 mm/1900 mm	2100 mm/1900 mm	2100 mm/1900 mm
Approach angle	32°	32°	32°
Departure angle	21°	15°	15°
Max gradient climbing	45°	45°	45°
<b>Operating parameters</b>			
Payload	800 kg	1000 kg	1500 kg
Number of carried people	1 + 9	1 + 13	1 + 19
Number of explosives in factory packets	800 kg	1000 kg (600 kg)	1000 kg
Number of detonators in factory packets	5000 units	5000 units	5000 units
Explosives in blasting cannisters	250 kg	750 kg (400 kg)	750 kg
Detonators in mining bags	150 units	400 units (200 units)	400 units
Shot service	Max. 4 persons	Max. 4 persons	Max. 4 persons
<b>Excavation parameters where vehicle can move</b>			
Longitudinal excavation slope	8°/15°	8°/15°	8°/15°
Transverse excavation slope	5°/8°	5°/8°	5°/8°
Excavation height	2300 mm/2100 mm	2300 mm/2100 mm	2300 mm/2100 mm
Excavation width	4400 mm	4500 mm	4700 mm





#### TEAM Marek Pasierbski

Poland, Wrocław/Długotęka  
ul. Wrocławska 56, 55-095 Długotęka  
T. +48 71 315 31 15  
F. +48 71 315 28 07  
e-mail: team-mp@team.pl  
www.pojazdy-specjalne.pl